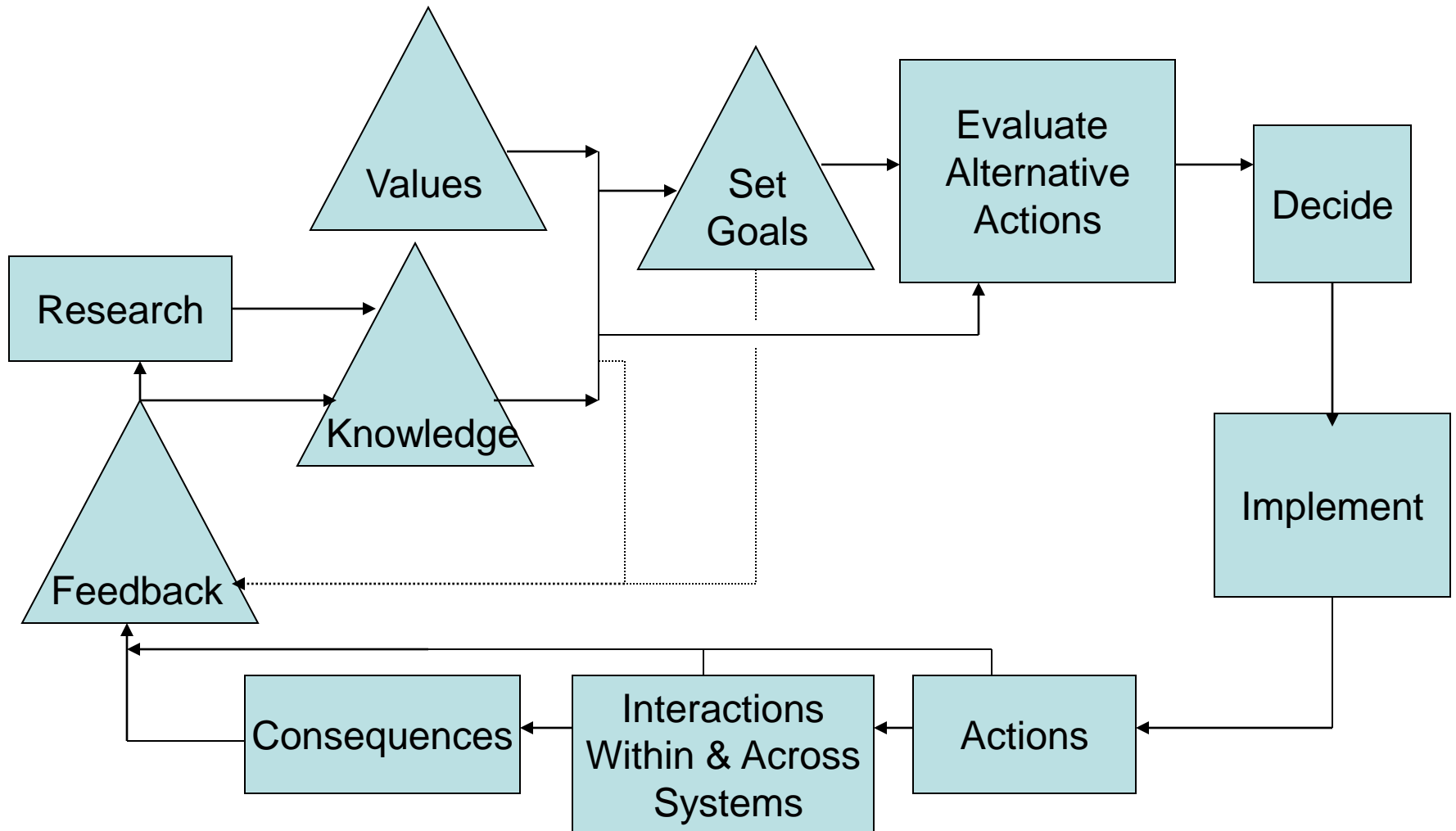


# *Integrating* the Work of the Roundtables

Ted Heintz

2 December 2009

# The Role of Feedback In Policy, Planning and Management



# The Integration and Synthesis Group

- Formed by the Roundtable Network in October, 2003
- Participants from four roundtables and other indicator projects

# Integration and Synthesis Group Objectives

- Develop a conceptual framework, based on systems models, within which to place indicators of sustainability.
- Provide a strong theoretical foundation for further integration and synthesis.
- Provide a basis for integrated sustainability assessments of mixed resource systems.

# Building Bridges to Promote Integration

- Not eco-centric, nor anthropocentric, but bi-centric
- Not specialized by resource system, but general and inclusive
- Use of systems concepts to promote logical consistency and comprehensiveness

# Important Features of the ISG Framework

- Accounting for Flows from the Environment
  - Cover everything from the environment that enters the human subsystem
- Accounting for Human Processes that Affect the Environment
  - Resulting from both extraction/production and use of goods and services

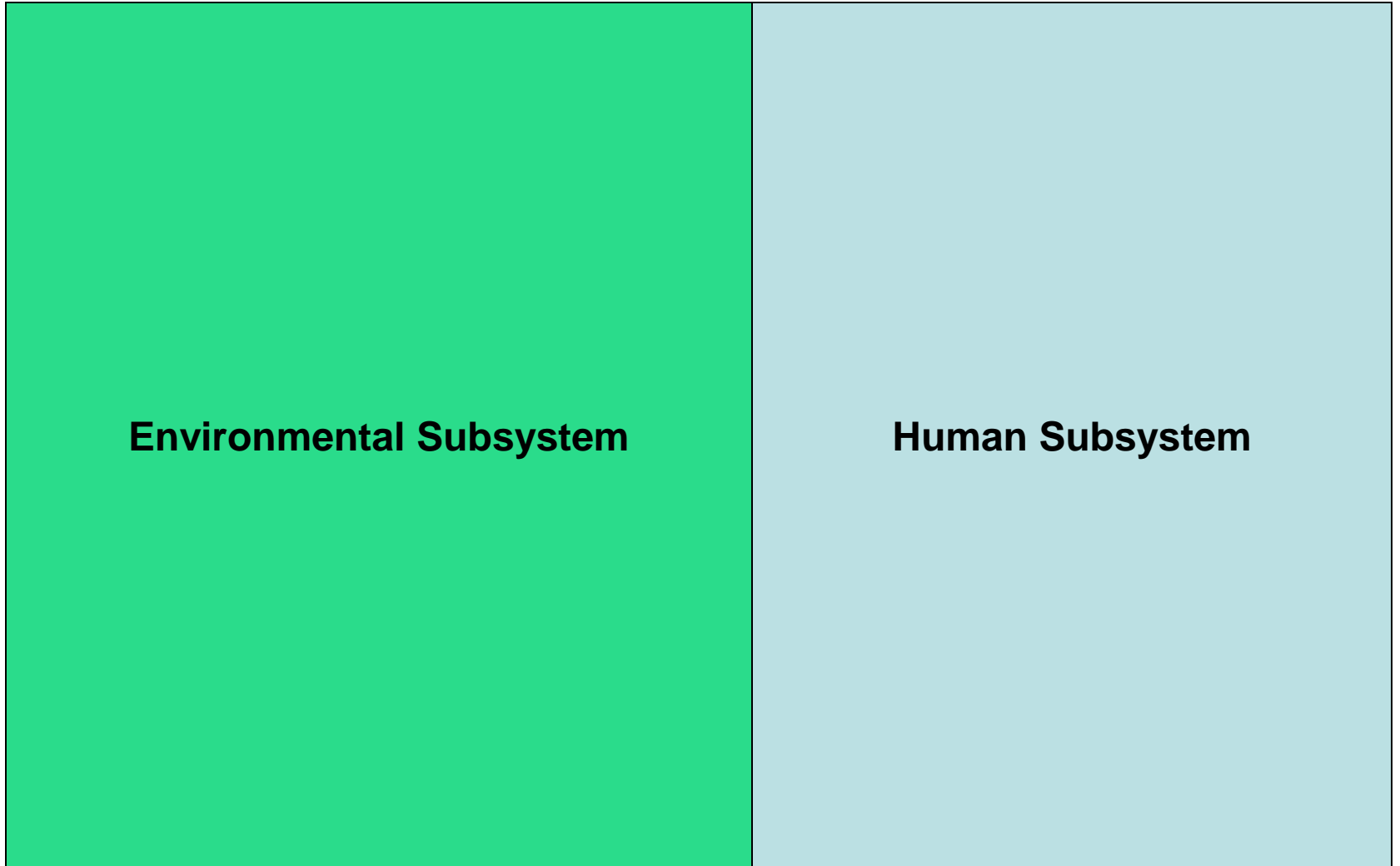
# Important Features of the ISG Framework

- Underlying Environmental Processes
  - Living things interacting in adaptive networks that sustain life
  - Processes in combinations that produce interactions affecting humans

# Important Features of the ISG Framework

- Underlying Human Processes
  - Humans interacting with each other to meet their needs
  - Processes in combinations that produce interactions affecting the environment

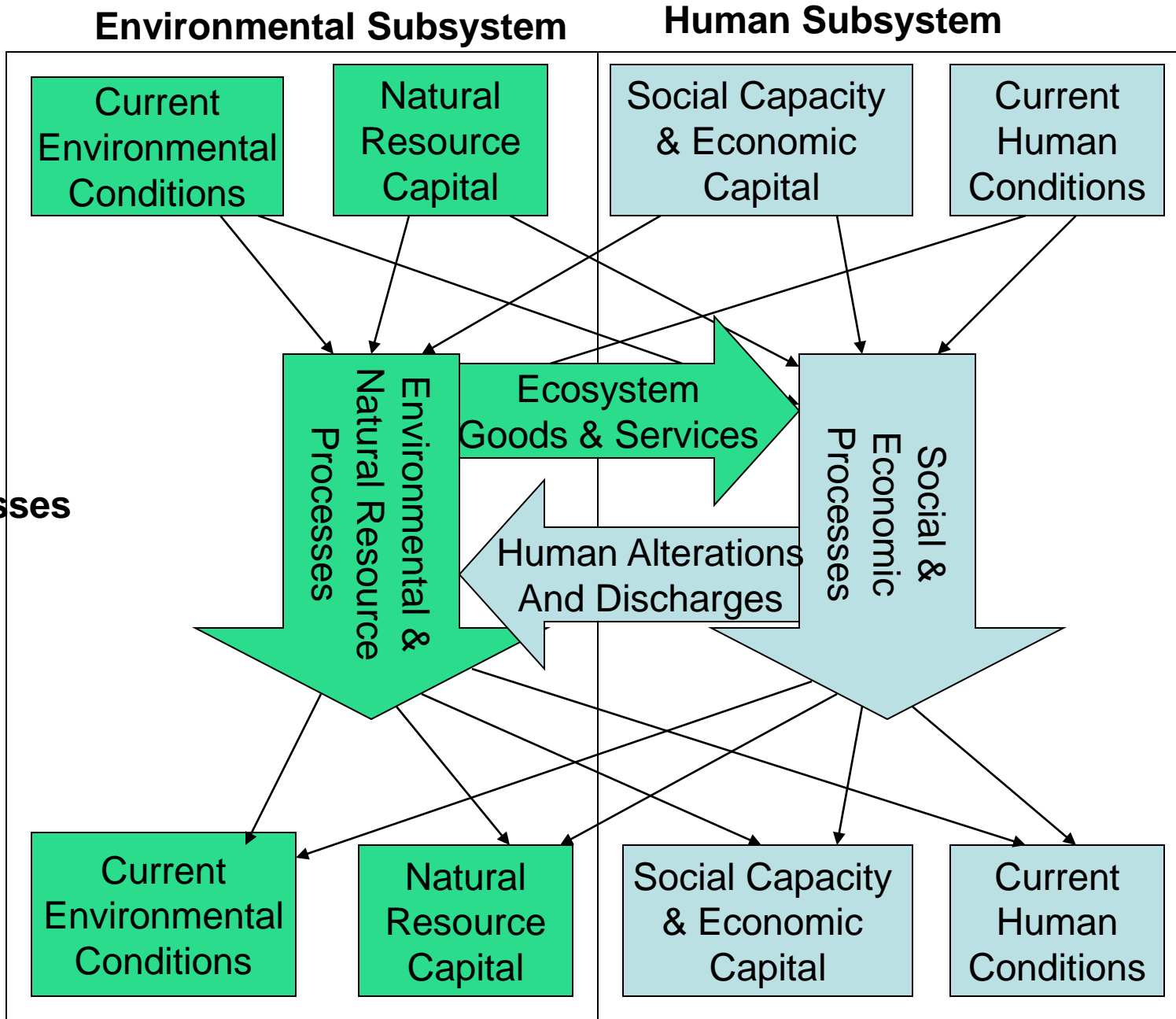
# The Earth's Ecosystem



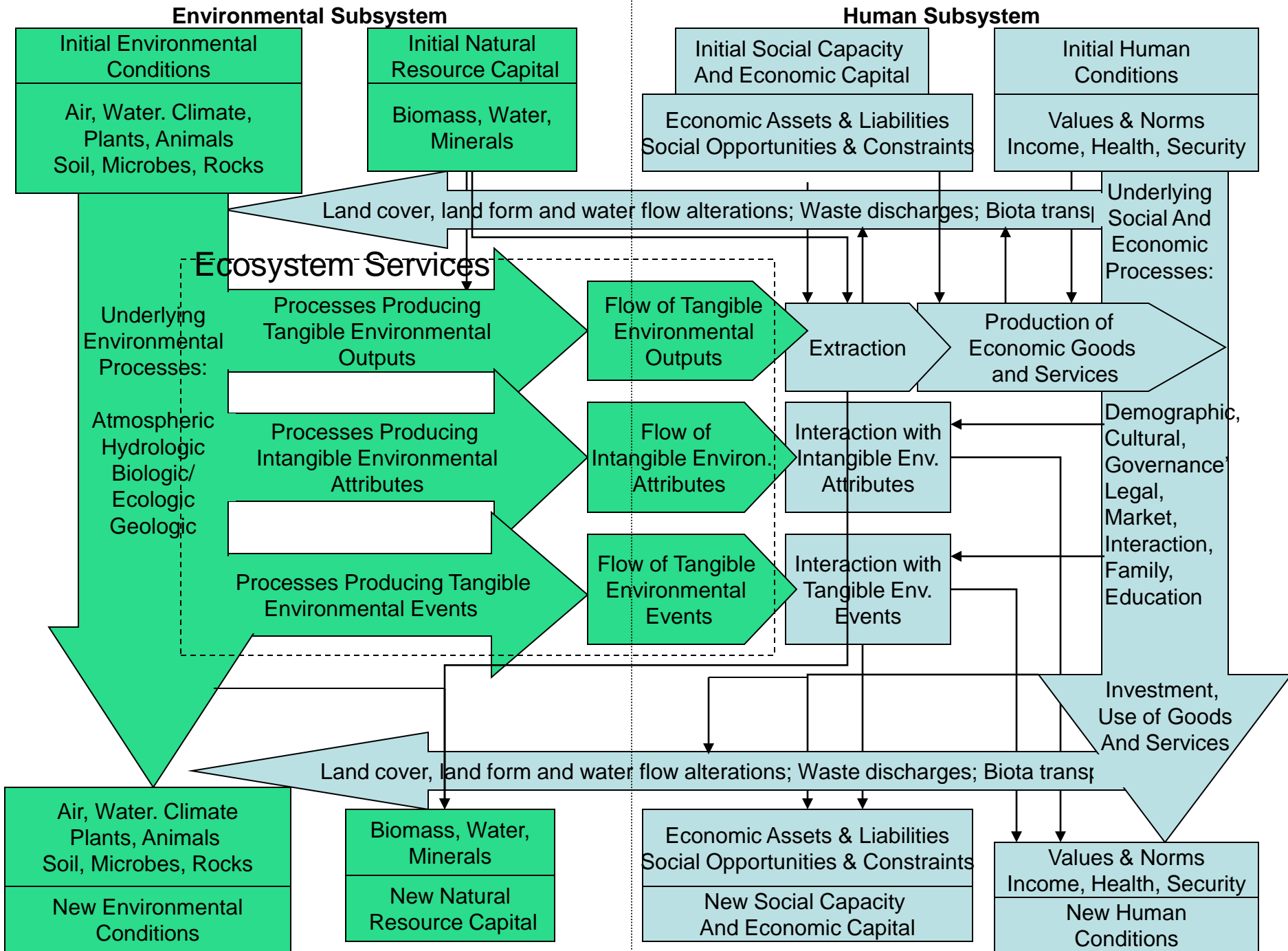
**Environmental Subsystem**

**Human Subsystem**

**Tier 0 – ISG Conceptual Framework**



**Tier 1a - ISG Conceptual Framework with Ecosystem Services**



Tier 2 – ISG Conceptual Framework